

HOW TO MEASURE YOUR FRIDGE OR FREEZER SEAL

Fridge Seals
Direct [.co.uk](https://www.fridge-seals-direct.co.uk)



OPTION 1



**OUTSIDE EDGE TO
OUTSIDE EDGE**

OR

OPTION 2



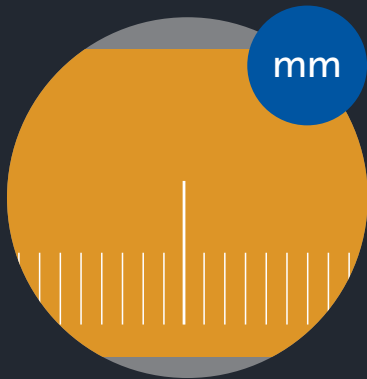
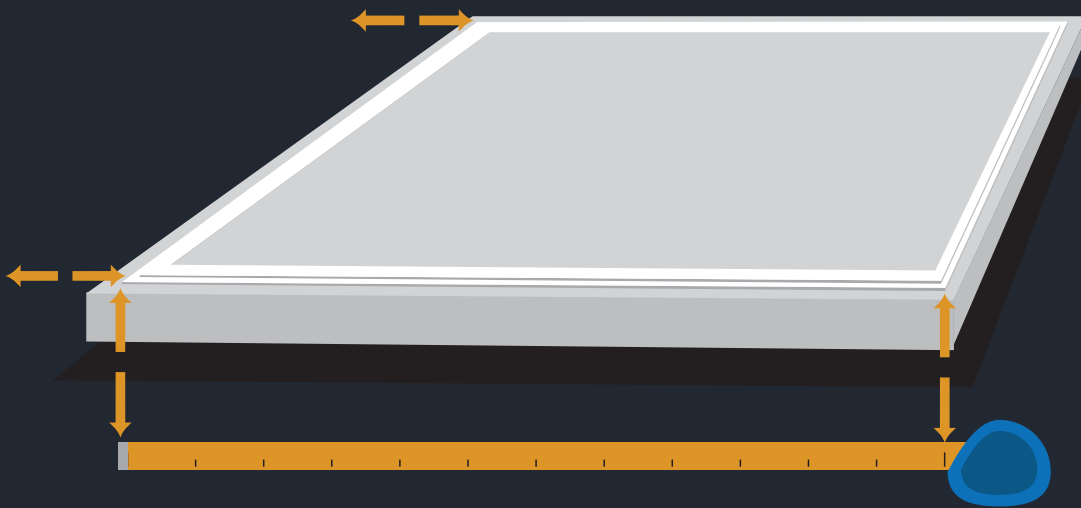
CENTRE TO CENTRE

OPTION 1

OUTSIDE EDGE TO OUTSIDE EDGE

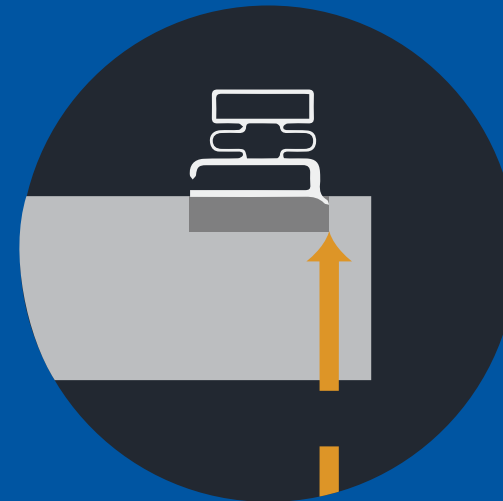
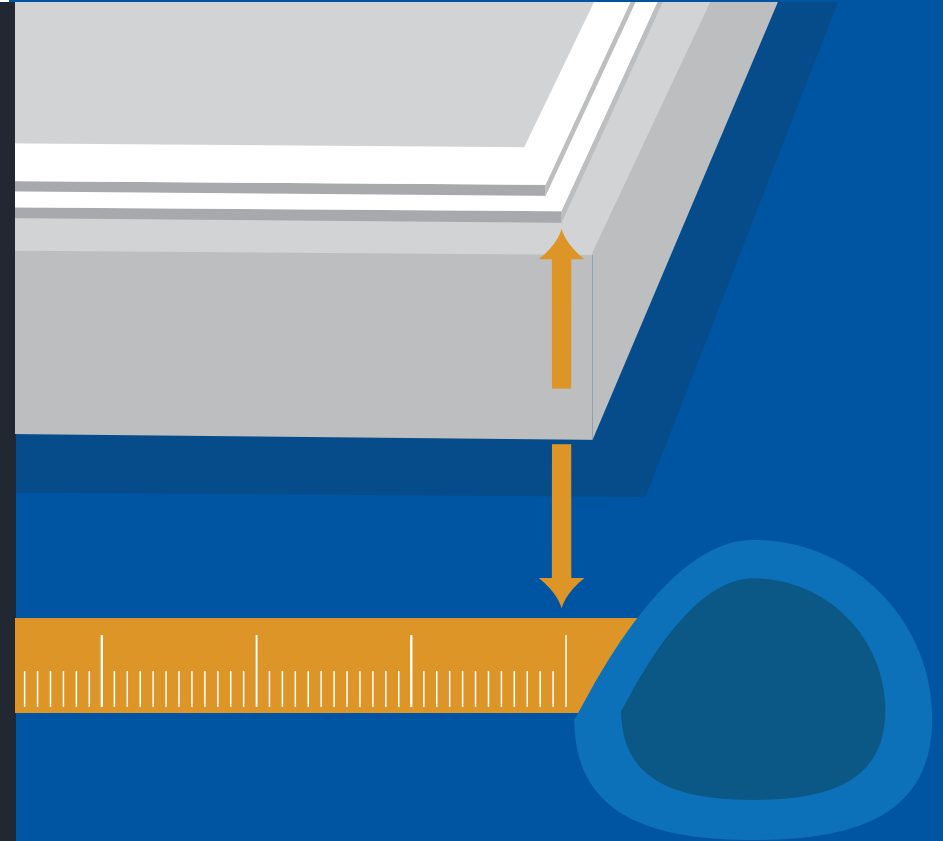
Best option if seal is damaged or cannot be removed from the door easily

Best Option for flap / screw in style – see IDENTIFY PROFILE GUIDE



mm

Take measurements of the width and height in millimetres and record via the website www.fridge-seals-direct.co.uk



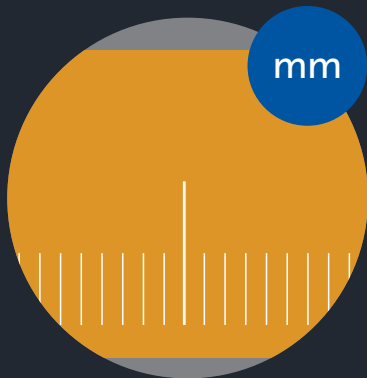
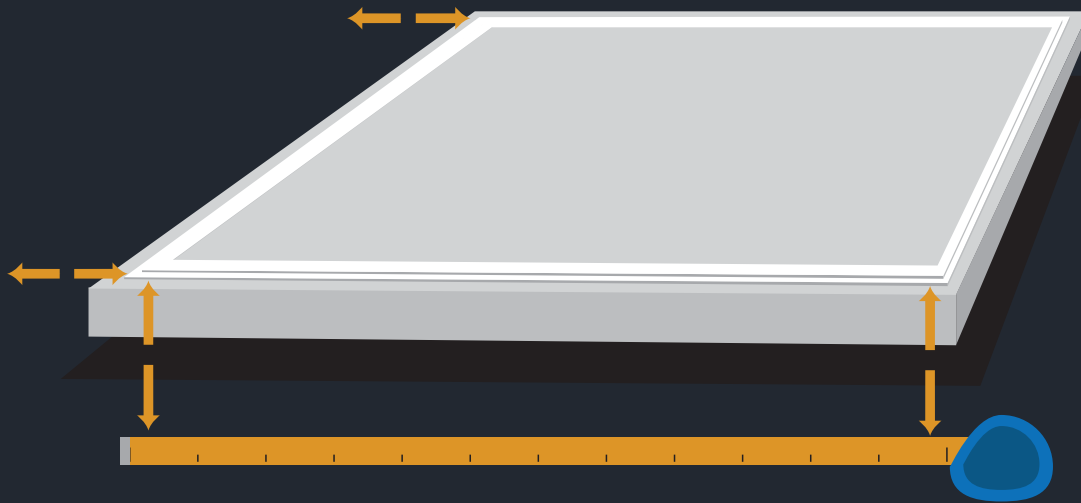
Measure from the outer edge of the seal for both the width and height of the seal.

OPTION 2

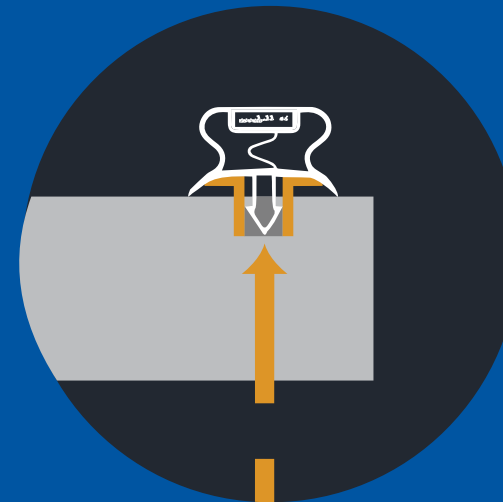
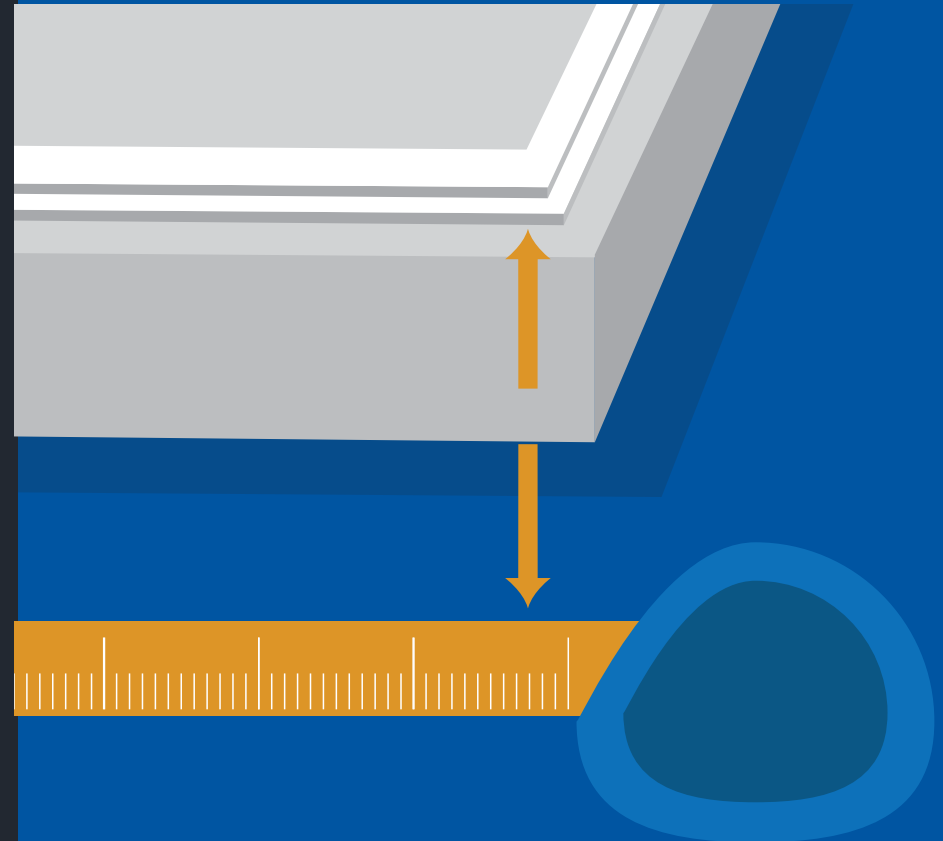
CENTRE TO CENTRE

Best option if dart or push in style seal – see IDENTIFY PROFILE GUIDE

Best option to get correct measurement is remove seal and measure centre of grooves in door



Take measurements of the width and height in millimetres and record via the website www.fridgesealsdirect.co.uk



Measure from the center of the seal for both the width and height of the seal.

WE HOPE THAT HELPED!

Why not download one of our other guides below or to find out more visit our website at fridesealsdirect.co.uk

- 📁 HOW TO INSTALL YOUR FRIDGE OR FREEZER SEAL
- 📁 HOW TO IDENTIFY YOUR FRIDGE OR FREEZER SEAL
- 📁 HOW TO MAINTAIN YOUR FRIDGE OR FREEZER SEAL

**Fridge Seals
Direct** .co.uk

